



COLLECTION INSTRUCTIONS

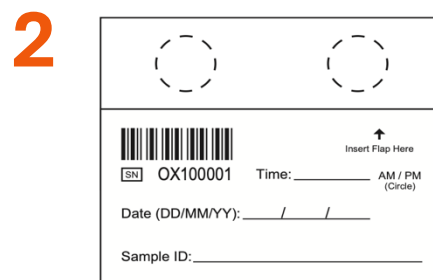
BIOLOGICAL INSIGHTS. *SMARTER RECOVERY.* PEAK PERFORMANCE

Important before you start:

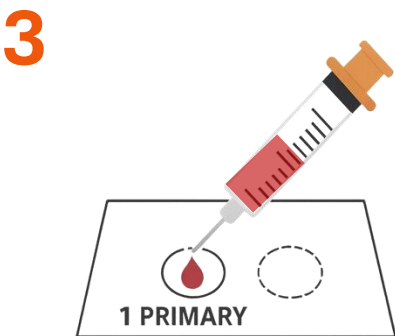
1. Store unopened kits in a cool, dry place or refrigerator
2. Avoid exposure to moisture and direct sunlight
3. Do not keep sample pouch open for longer than 2 minutes



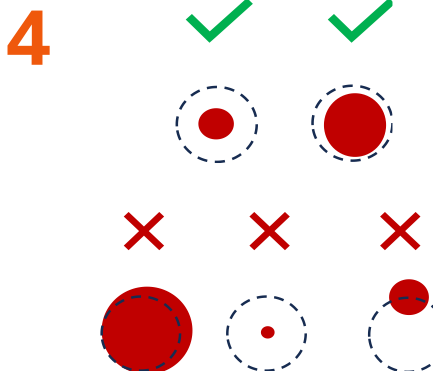
1 Obtain a small blood sample. A volume of <math><1\text{mL}</math> is sufficient. Ensure blood is collected only when ready to complete a sample. **Blood should not be kept in the syringe for > 2 minutes.**



2 Remove one collection card from the sample pouch labelled **NEW** and place it open on a clean, flat surface. Immediately **re-seal the sample pouch** to protect remaining devices from ambient moisture.



3 Slowly apply one drop of blood to the center of the **1 PRIMARY** circle. Ensure the syringe or needle does not touch or puncture the paper. Using a high gauge, low volume syringe can improve control (e.g., 27G 1mL)



4 Ensure blood fills approximately 50–100% of the circle and stays within the boundary. If blood spreads outside the circle, repeat blood collection using spot 2 SPARE. If another failed sample is produced, discard the card and start the blood sample collection process again.

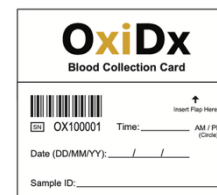


5 Complete the time, date and sample ID sections and tuck the flap into the card to close. Place the card into the sample pouch labelled **USED**. **Ensure the sample pouch is re-sealed.** Store USED sample pouch in a cool, dry place or refrigerator until transport for laboratory analysis.

This kit includes:



Moisture absorbent



Collection cards

Contact: chris@oxidx.com.au

Additional items required:



Syringe and needle



Non-erasable pen or marker

4. Ensure hands, gloves and workspace are clean and dry

5. Always keep moisture absorbent inside the sample pouch